

# Plein Air Drawing

*Ironbound by Childe Hassam*

- Head outside for some first hand nature views! Pick a scenic spot and set up a drawing board or easel.

- Take your scissors and cut your piece of sketch paper in half since we will be making two drawings.

Use crayons, paint, or pastels to capture the scene in front of you.

- Work quickly, creating your landscape with quick strokes and gestures before your light changes.

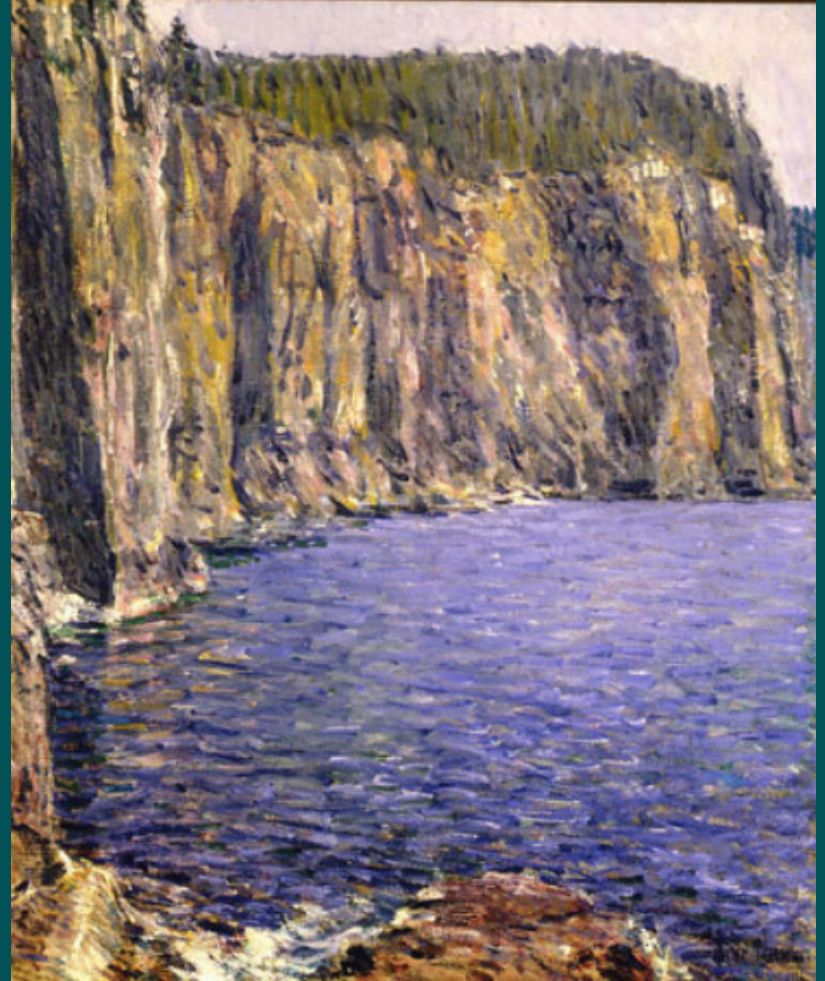
Make sure to record the time you start your drawing or painting.

- You will be recreating the same scene one hour apart in order to compare how sunlight affects the colors in the scene.

As you select your colors, look at the layers of different shades to see how a single color can be made of many others. For example, we usually think of shadows as gray, but shadows on grass can contain shades of dark green, brown, blue and even violet. See how the cliff shadows in the painting by Childe Hassam are made up of darker shades of the same yellows, pinks, blues and whites as the cliffs in full sun?

- Take your second half of paper and draw or paint your same landscape again an hour after the first one.

- Compare your two works of art. How are they different? What effects are present in one based on sunlight that are not in the other? How did this affect the colors you used?



## List of Materials

1 Sheet of Drawing Paper   Scissor   Crayons/Paints/Pastels